

NVR-B3601.37.35.C Release Notes

Zhejiang Uniview Technologies Co., Ltd.

NVR-B3601.37.35.C Release Notes

Keywords: Version information, usage notes, precautions.

Abstract: This document provides information about the **NVR-B3601.37.35.C** board software, including version information, usage notes, precautions, and features.

Acronym

Acronym	Full Name
NVR	Network Video Recorder

Contents

1 Version Information.....	3
1.1 Version Number	3
1.2 Applied Product Models	3
1.3 Release History	4
2 Usage Notes	4
3 Software Features	4
4 Version Change Description	4
4.1 Feature Change Description	4
4.2 Operation Change Description	15
4.3 Solved Issues	15
5 Related Documents and Delivery Method.....	15
6 Version Upgrade Guidance	15
6.1 Precautions	15
6.2 Upgrade Procedure	16
6.3 Upgrade Through the System Interface	16
6.4 Upgrade Through the Web Interface	16

1 Version Information

1.1 Version Number

NVR-B3601.37.35.C

1.2 Applied Product Models

Table 1 Applied Product Models

Product Models	Description
NVR302-32S	2 slots, 32-ch, H.264 and H.265, 4K ultra HD.
NVR304-16S	4 slots, 16-ch, H.264 and H.265, 4K ultra HD.
NVR304-32S	4 slots, 32-ch, H.264 and H.265, 4K ultra HD.
NVR304-09S	4 slots, 9-ch, H.264 and H.265, 4K ultra HD.
NVR301-04X	1 slots, 4-ch, H.264 and H.265, 4K ultra HD.
NVR301-08X	1 slots, 8-ch, H.264 and H.265, 4K ultra HD.
NVR301-16X	1 slots, 16-ch, H.264 and H.265, 4K ultra HD.
NVR301-08LX-P8	1 slot, 8-ch, 8 PoE interfaces plastic shell NVR , H.264/H.265 and 4K ultra HD.
NVR301-08X-P8	1 slot, 8-ch, 8 PoE interfaces , H.264/H.265 and 4K ultra HD.
NVR301-04LX-P4	1 slot, 4-ch, 4 PoE interfaces plastic shell NVR , H.264/H.265 and 4K ultra HD.
NVR301-04X-P4	1 slot, 4-ch, 4 PoE interfaces , H.264/H.265 and 4K ultra HD.
NVR302-08S2-P8	2 slot, 8-ch, 8 PoE interfaces , H.264/H.265 and 4K ultra HD.
NVR302-16S2-P16	2 slot, 16-ch, 16 PoE interfaces , H.264/H.265 and 4K ultra HD.
NVR301-16LX-P8	1 slot, 16-ch, 8 PoE interfaces plastic shell NVR , H.264/H.265 and 4K ultra HD.
NVR301-04E2-P4	1 slot, 4-ch, 4 PoE interfaces , H.264/H.265 and 4K ultra HD.
NVR301-08E2-P8	1 slot, 8-ch, 8 PoE interfaces , H.264/H.265 and 4K ultra HD.
NVR301-16E2-P8	1 slot, 16-ch, 8 PoE interfaces , H.264/H.265 and 4K ultra HD.
NVR301-08LE2-P8	1 slot, 8-ch, 8 PoE interfaces plastic shell NVR , H.264/H.265 and 4K ultra HD.
NVR301-16LE2-P8	1 slot, 16-ch, 8 PoE interfaces plastic shell NVR , H.264/H.265 and 4K ultra HD.
NVR301-04LE2-P4	1 slot, 4-ch, 4 PoE interfaces plastic shell NVR , H.264/H.265 and 4K ultra HD.
NVR301-04E2	1 slots, 4-ch, H.264 and H.265, 4K ultra HD.
NVR301-08E2	1 slots, 8-ch, H.264 and H.265, 4K ultra HD.
NVR301-16E2	1 slots, 16-ch, H.264 and H.265, 4K ultra HD.
NVR304-16S-P16	4 slot, 16-ch, 16 PoE interfaces , H.264/H.265 and 4K ultra HD.
NVR304-32S-P16	4 slot, 32-ch, 16 PoE interfaces , H.264/H.265 and 4K ultra HD.

NVR302-09S2	2 slots, 9-ch, H.264 and H.265, 4K ultra HD.
NVR302-16S2	2 slots, 16-ch, H.264 and H.265, 4K ultra HD.

1.3 Release History

Table 2 Released Versions

Version No.	Basic Version No.
NVR-B3601.37.35.C	NVR-B3601.37.35.230509

2 Usage Notes

None.

3 Software Features

Table 3 Software Features



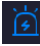
Service	Feature
Audio and video decoding	H.264/H.265 video compression, 4K ultra HD, up to 16Mbps bit rate.
Data storage	Local storage of recordings in hard disk(s).
Web-based management	Web-based user interface for device configuration and management.

4 Version Change Description

4.1 Feature Change Description


Table 4 NVR-B3601.37.35.230509 Feature Changes

	Feature	Description
Newly added features	Improved layout of VCA search	<p>Face snapshot search and face comparison search tabs are moved to the Face Search menu (only for the local interface).</p> <p>Allows user to search images by object types on the page of motor vehicle search, non-motor vehicle search, and human body search, and search by events on the general search page.</p> <p>Deleted behavior search, and user can search behavior images on the page of motor vehicle search, non-motor vehicle search, human body search or general search.</p> <p>Deleted vehicle search, and user can search vehicle images on the page of motor vehicle search and general search.</p> <p>The improved layout enables user to search images by objects and by events.</p>
	Optimized UMD	Ultra motion detection (UMD) is merged with motion detection, deleting

	Feature	Description
	configuration	<p>the individual configuration page.</p> <p>NVR supports UMD-enabled IPC. The motion mode is added (Alarm > Motion Detection) and user can choose Motion Detection or Ultra Motion Detection. If user chooses UMD, parameters such as detection area, sensitivity and snapshot type are displayed.</p> <p>For the video retrieval on the Playback page, the sub type UMD now belongs to the type motion detection (it belonged to VCA before).</p> <p>Only certain NVR supports NVR-side UMD. When NVR supports UMD, the smart mode can be set as NVR side analysis.</p> <p>In the previous version, users have to disable motion detection manually on Motion Detection page before they can enable UMD. This is optimized in this version.</p>
	Improved layout of smart display configuration	<p>On the local interface, a configuration button is added on the smart preview page and user can click the button to enter the Alarm Subscription tab of the Smart Display Configuration page.</p> <p>The Alarm Subscription tab includes face recognition, perimeter protection, and user can choose alarm types to display the real-time snapshots of desired types.</p> <p>On the smart preview page of the local interface, event types of face, perimeter are deleted, and user now can select object types to display their real-time snapshots based on motor vehicle, non-motor vehicle, face and human body.</p>
	NVR supports sending an email with alarm information to the specified email address(es) when an alarm occurs.	<p>NVR can send an email with alarm information to the specified recipient(s), avoiding frequent alarm information push to all email addresses.</p> <p>The alarm configuration page added the Send Email item with a list showing the configured recipients' addresses. Up to 6 recipients are allowed and the chosen recipients will receive an alarm email when an alarm occurs.</p>
	The local interface supports overlay multi-line characters on the preview page.	<p>The OSD Content tab is added at Camera > OSD, which allows to configure custom OSD for the IPC. Up to 5 OSDs are allowed and each OSD can be enabled/disabled and named separately.</p>
	Allows to configure arming schedule and day/night mode for IPC that supports alarm sound/light for human body detection.	<p>For cameras that support human body detection and sound/light alarm schedules: user can configure an arming schedule for sound and light alarms.</p> <p>For cameras that support human body detection and sound/light day/night mode: user can select day/night mode or custom mode to configure parameters for sound and light alarms.</p> <p>This function requires camera support.</p>
	NVR supports configuring alarm sound/light for auto-tracking dome cameras.	<p>Connecting the auto-tracking dome cameras that support sound and light, user can configure alarm sound/light for auto tracking, including day/night mode, arming schedule and audio of sound, and day/night mode and blink time of light.</p>
	Supports continuously track	<p>NVR now allows user to configure continuously track for front-end IPCs. This feature is configurable only if the IPC supports auto tracking. If supported, user can select continuously track or customize tracking duration for the IPC.</p>
	Supports rapidly disarming IPC actions on NVR	<p>On the local interface,  appears on the preview window when the NVR receives an alarm from a camera ( if it is a tampering detection alarm).</p> <p> is added on the window toolbar to disarm IPC actions. This function requires camera support.</p>

	Feature	Description
	The Web interface adds streaming management function.	Streaming management function is added on the Maintenance menu of the Web interface, including Live View and Playback tabs. User can view detailed information about live and playback streams on these tabs and stop streaming manually.
	The local interface supports displaying passwords of online IPCs.	The local interface can display camera passwords on the Camera page. The admin user can click a button (Show IPC Password) to view the passwords of online IPCs after authentication.
	A small eye icon is added on the password input pages of the local interface, and the password can be displayed in clear text by clicking the icon.	On the local interface, a small eye icon is added on all the password input pages (except on the login page). User can click this icon to view the password in clear text. The password is not displayed in clear text by default.
	Supports 16MP IPCs	NVR can connect 16MP IPCs via the Uniview protocol and realize functions including live view, playback, two-way audio, alarm and VCA. On the local interface, NVR cannot decode the 16MP main stream and will automatically switch to the sub stream. For playback, a message will be displayed to prompt user to switch to the sub stream if the stream exceeds the decoding capability.
	Supports 16K sampling rate in G.711 audio format	NVR can connect IPCs that support G.711U/G.711A audio compression and 8K/16K sampling rate. The local&Web interfaces support the configuration and audio decoding at 16K sampling rate in G.711 format.
	Optimized policy of hard disk access to the NVR	<ul style="list-style-type: none"> For NVR with no hard disk: If there is no hard disk, the local&Web interfaces will prompt user to add a hard disk for the NVR. User can click the setting button to view hard disk information on the local interface. For NVR with unformatted hard disk: If there is hard disk unformatted, a message will alert user there is unformatted disk and show its slot. User can format hard disk by clicking the setting button on the local interface and configuration button on the Web interface. To close the prompt, user can click Exit on the local interface and Close on the Web interface, otherwise the prompt is always flashing. This event will not recorded in logs or alarms.
	Optimized prompt of abnormal device time	If there is abnormal device time, the local&Web interfaces will prompt user to replace the button battery and reset the time. User can click the setting button to reset the time on the local interface.
	Supports IPC monostable alarm output	For camera alarm output (D>), user can set alarm duration to Custom or Maximum on the NVR. When the Custom option is enabled on the NVR, the relay mode on the camera is displayed as Monostable.
	Optimized people present alarm UI	Supports counting people present for specified camera(s), reporting critical/major/minor alarms according to the number of people present, and triggering the corresponding actions if configured. (Configuration page: 1、4 scenes are available. Allows user to set scene name, alarm thresholds, arming schedule, and alarm-triggered actions for each scene separately, and view the relevant rules while configuring channels. 2、Allows user to choose to reset the number of people present

	Feature	Description
		<p>automatically or manually.</p> <p>Both local and web clients support people present alarm configuration.)</p> <p>The people flow counting on Smart Preview page now displays real-time people flow statistics including the number of people coming in/out/more allowed/present; The normal/slightly/moderately/heavily crowded alarms are displayed with different colors. When user changes the scene on the preview page, the corresponding statistics will also be changed.</p>
	Supports magnifying the video of VCA search on the local interface	<p>On the local interface, user can magnify the video of VCA search in tile mode by double-clicking the video or clicking the full-screen button on the right window. The magnified window plays the video on the left, and displays the event details and object properties on the right.</p> <p>The video cannot be magnified if the search results are shown in list mode.</p>
Optimized features	Optimized default alarm policy of NVR after access IPC	<p>For detection switch:</p> <ul style="list-style-type: none"> For face detection, cross line detection, intrusion detection, enter area, leave area, ultra motion detection (UMD), elevator entrance detection and high-rise littering, their enabled/disabled status is based on IPC configuration if the IPC is connected for the first time, otherwise it is based on NVR. A prompt will be displayed if their enabled/disabled status is different on IPC and NVR. Motion detection is enabled/disabled based on IPC configuration if the IPC is connected via the private protocol, otherwise it is disabled by default if the IPC is connected via other protocols. Human body detection and people counting are enabled/disabled based on IPC configuration. Based on NVR configuration, video loss, audio detection and tempering detection are disabled by default. <p>For detection rules:</p> <ul style="list-style-type: none"> The detection rules of certain functions are based on IPC configuration, including face detection, cross line detection, intrusion detection, enter area, leave area, elevator entrance detection, high-rise littering, motion detection, audio detection, tempering detection and people counting. The detection rules of UMD are based on NVR configuration if the connected IPC supports motion detection, and based on IPC configuration if the connected IPC supports UMD. Video loss does not support detection rule configuration. <p>For arming schedule:</p> <p>Based on NVR configuration, all detection functions adopt 24/7 arming schedule by default for the first configuration. The arming schedule of perimeter protection, UMD, motion detection, human body detection, elevator entrance detection and people counting will be synced to the IPC.</p> <p>For trigger actions:</p> <p>For cross line detection, intrusion detection, enter area, leave area, UMD, elevator entrance detection, and alarm sound/light of human body detection, the trigger actions are based on IPC configuration. The trigger actions of other functions are based on NVR configuration.</p>
	Improved layout of setup on the Web interface	<p>The Disk menu is changed to Storage.</p> <p>Deleted the Schedule tab, and Recording Schedule and Snapshot</p>

	Feature	Description
		<p>Schedule tabs are moved to the Storage menu.</p> <p>Motion Detection, Tampering Detection, Human Body Detection, Video Loss and Audio Detection tabs are moved from the Camera menu to Alarm.</p> <p>The order of the Network Info tab on the Maintenance menu is adjusted to the first.</p>
	Supports copying capture mode to other camera(s)	<p>On the Encoding page, the capture mode is added on the copy page and can be copied to other camera(s).</p> <p>The cameras that connect to the NVR via the Onvif, GB28181 and custom protocol do not support this feature.</p>
	Supports NVR local upgrade via EZCloud	<p>After the NVR is connected to EZCloud, user can access the Web interface of NVR from EZCloud and upgrade the NVR and the connected IPCs by uploading an upgrade package.</p> <p>Make sure that at least one hard disk is available on the NVR for local upgrade.</p>
	Optimized the showing policy of PoE cameras status	<p>If the PoE camera is unplugged or no PoE camera is connected to the NVR with PoE ports:</p> <p>The offline status of PoE cameras will not be displayed on the live view window. User can view the PoE cameras status by clicking Camera > Camera or Maintenance > System Info > Camera on the local&Web interfaces, or clicking  on the local interface.</p>
	The camera name is added in the exported people counting report	The camera name is added in the exported report from the People Counting Report page of VCA search.
	Adds the alarm type in the body of the alarm email	The alarm type is added in the alarm-triggered email from the NVR.
	The Web interface can load service without plug-in installed	<p>Supports V3.0 plug-in. The Web interface can load service even if the plug-in is not installed. User can drag the scroll bar of image parameters on the live view window to adjust the image splicing distance of binocular wide angle camera.</p> <p>Except for the multi-video live view and playback that require the plug-in, the rest functions can be used normally.</p> <p>User can normally import and export after the plug-in is installed.</p>
	An editing button overlays on the preview window when the password of the camera is wrong	If the username or password input for an IPC is incorrect, the live view window will show the cause and a button, and user can click the button to modify the username or password.
	An editing button overlays on the preview window when no resource is provided for preview	If there is no resource for preview on the local interface, the live view will display a message to prompt user to adjust video parameters, and an editing button. User can click the button to decrease the resolution on the Encoding page.
	Optimized the prompt when cameras are sorted	After the cameras are sorted, a message will alert user that the recordings corresponding to the channel ID will be changed.
	Supports configuring alarm sound & light for IPCs that support perimeter protection	<p>User can configure front-end alarm sound & light for IPCs that support perimeter protection.</p> <p>The configuration items are displayed only when the IPC supports alarm sound & light, including alarm sound (turn on/off, arming schedule, audio, play count), and alarm light (turn on/off, arming schedule, blink time).</p>
	Configuring arming	User can configure arming schedule of motion detection for IPCs



	Feature	Description
	schedule of motion detection for IPCs	on the NVR, and then IPCs report alarms according to the arming schedule.
	Channel name is displayed when user selects channel on the VCA Search page	The VCA Search page on the Web client now allows user to view channel ID and channel name to quickly find the desired channel.
	Supports copying storage mode to other channels	The storage mode parameter is added on the Copy page of encoding settings, so user can copy storage mode to other channels.
	Improved layout of upgrade on the Web interface	On the Web interface, the Local Upgrade and Cloud Upgrade tabs are deleted from the Maintenance menu, and the Upgrade menu is added, including NVR Upgrade and IPC Upgrade tabs.
Deleted features	Deleted the UMD tab of the VCA Config menu	UMD and motion detection are merged, and can be selected as two motion detection modes. For details, please refer to “Optimized UMD configuration”.
	Deleted Behavior Search tabs of the VCA Search menu	See “Improved layout of VCA search” for details.
	On the smart preview page of the local interface, event types of face, perimeter are deleted	Face Recognition , Perimeter tabs are moved to the Alarm Subscription tab. See “Improved layout of smart display configuration” for details.
	Deleted Send Email under conventional actions of the Trigger Actions page	See “NVR supports sending an email with alarm information to the specified email address(es) when an alarm occurs” for details.
	Deleted the motion detection alarm icon  that overlays on the preview window of the local interface	On the local interface,  appears on the preview window when the NVR receives an alarm from a camera
	Deleted the Schedule tab of the Camera menu	Deleted the Schedule tab, please see “Improved layout of setup on the Web interface” for details.
	Deleted Local Upgrade and Cloud Upgrade tabs on the Maintenance menu	See “Improved layout of upgrade on the Web interface” for details.

Table 5 NVR-B3601.33.45.221212 Feature Changes

Item	Feature	Description
Newly added features	Supports front-end UMD	Adapted to IPCs that support UMD (ultra motion detection), which can recognize object types, and distinguish motor vehicles, non-motor vehicles and pedestrians. NVR supports UMD configuration, smart preview, VCA search, event playback, and storage of alarm information and snapshots.
	AAC audio decoding	Supports decoding AAC bit streams from IPC for live view, playback, and two-way audio on the local and web interfaces to meet demands for

Item	Feature	Description
		higher audio quality.
Improved features		
Deleted features		

Table 6 NVR-B3601.33.41.221013 Feature Changes

Item	Feature	Description
Newly added features	Supports dual-sensor IPCs, supports adjusting splice distance for dual-lens cameras	Supports connecting dual-sensor cameras and can display videos in proportional mode or wide mode (32:9 aspect ratio). If the camera is a one-channel, dual-lens camera that supports image splicing, the Splice Distance parameter is displayed on the Live View page and the Image page on both the local and web interfaces, and user can use the slider bar to adjust the splice distance for the best splicing effects.
		The cameras that support box-dome linkage can be connected as normal dual-channel cameras.
Improved features		
Deleted features		

Table 7 NVR-B3601.33.16.220721 Feature Changes

Item	Feature	Description
Newly added features	Adapted to front-end alarm light and sound linkage of human body detection	Allows user to configure alarm sound and light for human body detection alarms, including turning on/off alarm light and sound and other configurations.
	Supports one-click disarming by switch	Allows user to disarm all linkage actions of the NVR, and alarm sound & light of the IPC by the first alarm input switch on the NVR.
Improved features	Added detection area for front-end tripwire people counting	Supports drawing a detection area for tripwire people counting.
	Added day/night mode under alarm sound & light configuration in perimeter protection	Day/night mode is added under the alarm sound & light configuration of perimeter protection. The configuration item is displayed if it is supported by the IPC.
	Supports downloading SD videos on the web	The web and local interface allow user to download videos in HD or SD

Item	Feature	Description
	and local interface	mode.
Deleted features		

Table 8 NVR-B3601.32.31.220427 Feature Changes

Item	Feature	Description
Newly added features	One-key disarm linkage	Allows user to conveniently disarm one or multiple linkage actions of the NVR or its IPCs by a set schedule or period.
	Control wiper via network keyboard	Supports using a network keyboard to control wiper.
	Low battery notification	Prompts users to replace the button battery and reset the time if the system detects incorrect time after the user logs in.
	Optimized audio configuration	Added the Audio Configuration tab to configure all audio parameters of IPCs. (The configurable audio input and output parameters include enable/disable audio input, access mode, input volume, audio compression, sampling rate, and audio output. The supported configuration items may vary with IPCs.)
Improved features	Optimized alarm sound and light linkage	Allows users to configure alarm sound and light of IPCs on the NVR, including arming schedule and action mechanisms. It meets the needs of users for alarm sound and light linkage in different time periods. (Users can configure alarm sound & light in the Trigger Actions page. The configurable parameters include start time, end time, audio, repeat, alarm light, blink time, brightness, etc.)
	Configurable audio storage	Allows users to enable/disable audio storage of each camera separately.
	Optimized network test and packet capture	Separated Packet Capture from the Network Test tab. Two addresses and multiple cameras can be detected simultaneously. (Allows users to perform network test by entering test address or selecting camera, test duration, and test packet size. Users can view the real-time packet loss rate or network latency in a chart, and export the results when the test ends.) Users can view whether the network is normal intuitively so as to troubleshoot network issues quickly, improving user experience and saving maintenance costs.
	Changed Telnet to SSH	SSH is adopted to access NVR remotely. It is disabled by default, and the secondary logon is required when enabled.
	Reporting people counting results by hours	A new report type (Hourly) is added on the local interface to allow users to view people counting results by hours.
	Adapted to the new encryption algorithms of IPCs	Supports SHA-256 to adapt to SHA-256 based RTSP authentication on IPC.
	Supports 12 MP decoding	Supports 12 MP camera access, storage and decoding.
	Optimized perimeter protection configuration on the	The local interface now allows users to draw box(es) when configuring object size for perimeter protection, instead of inputting manually, improving the ease of operation.

	local interface	
	Optimized the layout of People Counting Report	The People Counting Report is moved to the VCA Search tab.
	Changed <i>Target Type</i> to <i>Object Type</i>	The <i>Target Type</i> is changed to <i>Object Type</i> .
	Added the perimeter scene	A new scene (Perimeter) is added to allow users to select installation scenes, reducing the tedious adjustment of image parameters. This feature is only available for certain IPCs.
Deleted features	Deleted Audio Stream in the Encoding tab	See Optimized Audio Configuration for details.
	Deleted IPC Camera Audio in the Enhanced Features tab	See Optimized Audio Configuration for details.

Table 9 NVR-B3601.31.30.211123 Feature Changes

Item	Feature	Description
Newly added features	Persistent WebSocket connections with upper platform	NVR can initiate WebSocket connections over SSL/TLS with an upper platform (EZCloud or third-party platform) to achieve bi-directional signaling communication based on the WSS.
	WEB plugin 3.0	The new Web plugin supports a variety of new browser versions and provides better performance in supporting multi-channel and high-resolutions.
	Front-end people flow counting and crowd density monitoring	Supports the connection of IPCs capable of people flow counting and crowd density monitoring, supports the configuration of people flow counting and crowd density monitoring, the search and export of people flow counting statistics.
Improved features	Dahua IPC activation	NVR can activate Dahua IPC automatically.
	Added alarm input channel name	The alarm input page added the configuration of alarm input channel name.
	Uniform password mechanism on IPC and NVR	IPC and NVR have uniformed the password mechanism and extended password length to 32 bits.
Deleted features		

Table 10 NVR-B3601.29.43.210205 Feature Changes

Item	Feature	Description
Newly added features	Remote access of IPC	Support remote access to IPC over WAN on the NVR's Web interface.
	Snapshot	Support snapshot.
	Change IPC password	Support changing the password of IPC in batches. Support changing the password of IPC when changing the password of NVR.
	USB wireless network adapter	Support connecting USB wireless network adapter.

Item	Feature	Description
	POS	Support POS OSD in playback on the Web interface.
	One-click collect diagnosis info	Support exporting NVR diagnosis information, IPC diagnosis information and operation logs with one click.
	LPR alarm	Support pushing LPR alarms so that the alarms can be received on the app side.
	ISW Management	Support ISW Management.
	Perimeter protection camera	Supports connecting deep learning perimeter protection IPCs, which feature intrusion detection, cross line detection, enter area and leave area detection.
	Supports front-end Smart Intrusion Prevention (SIP)	Supports connection of SIP-enabled IPC, supports configuration, smart preview and search.
	Arming scheduling for SIP and human body detection	Supports synchronizing arming schedules for smart intrusion prevention and human body detection to IPC.
	On-screen watermark descriptions	Added watermark descriptions on the screen.
Improved features	Playback thumbnail	Support displaying playback thumbnail when hovering the mouse cursor over the timeline for a certain time in playback page.
	Playback operation	Support quick skipping to the earliest recording in playback page.
	OSD	Add camera ID in live view page.
	FTP username	The length of FTP username changes from 15 characters to 64 characters.
	Ease of use of intelligent functions	Support saving preview mode after device is restarted.
	Backup file name	The file name of recording backup exported on the local interface are same with that on the Web interface.
	Multi-NVR networking	In a network environment with multiple NVRs, add the status of IPC being managed by other NVR.
	Improved VIID upstream performance	The speed of image uploading via VIID reaches 60 images per second.
	256 bytes for RTSP	Supports 256-byte RTSP URL.
Deleted features	LPR	Add license plate recognition display page.
	Face recognition	Support adding face snapshots to face library.
	LPR	Whitelist/blacklist vehicle plate recognition.
	GA/T1400	Upload face & plate snapshots to VMS.
	Video&Image DB (Phase 1)	Vehicle license plate recognition and search.
	Face recognition (phase I)	Used with USB intelligent analysis device to provide blacklist and whitelist functions. Only 4 Series –B model supports this function.

Table 11 NVR-B3601.28.26.200319 Feature Changes

Item	Feature	Description
Newly added	Mask detection	Support alarm and configuration of mask detection cameras.
	Separate camera name	Support syncing camera name (up to 40 characters) to its OSD name.

Item	Feature	Description
features	and it's OSD	The sync function is enabled by default.
	Improved error message in preview page	More detailed messages such as incorrect password and network error are displayed in preview page, so that user experience improved.
	Support disabling third stream audio	Support disabling third stream audio and copying audio settings to multiple channels.
	Connect video doorbell	Support video doorbell, which, when connected to the app via an NVR, doorbell calling alarm can be received both on the NVR and the app.
	H.265	Auto switch to H.265 when first connected is enabled by default.
	Live view without plug-in	Live view is available without plug-in on the Web interface.
	LPR	Add license plate recognition display page.
	New local interface	New local GUI; New interaction design in wizard, channel configuration, playback and VCA.
	Retrieve password	Retrieve password by email and mobile client.
	Preset patrol	Up to 32 presets are allowed for one preset patrol.
	Playback in main stream	Playback in standard definition automatically switches to main stream for a maximized window.
	Separate permissions	Separate channel live view and audio permissions.
	Alarm configuration	Add human body detection.
	Improve switching performance when maximizing/restoring window	For connected Topsee cameras, live video starts quickly when maximizing or restoring window.
	Face recognition	Support adding face snapshots to face library.
	LPR	Whitelist/blacklist vehicle plate recognition.
	Heat map	Support heatmap statistics and export.
	GA/T1400	Upload face & plate snapshots to VMS.
	Add device without account	Scan to add NVR on app without cloud account.
	Onvif	Support Profile S.
	Pattern unlock	Support drawing pattern to unlock.
	Alarm push notification	Push alarm notification traversing NAT.
	Web maintenance	Add net detection & network flow.
	Auto add IPC	Automatic search and add IPC for 1-SATA NVR with zero configuration.
	GDPR	Add GDPR privacy statement.
	Video&Image DB (Phase 1)	Vehicle license plate recognition and search.
	Alarm report	Alarm report in non-subscribe mode, with configuration added on local interface.
	Multicast	Add uplink RTSP multicast function
Improved	Improved playback	Support setting skip interval for forwarding and rewinding playback.

Item	Feature	Description
features	Improved storage settings	Support encoding settings of third stream, and more Storage Mode options, so that solve the problem that camera with no third stream cannot play back in SD mode.
	Save password	Support saving password.
	Improved PTZ presets	Configurable PTZ preset name.
	Improved live view startup speed	IPC live view starts up quickly.
	POS	Supports AVE protocol. Changed the Start Before setting to 5sec on POS playback page and added a refresh button.
	U-Code	U-Code configuration for sub and third streams.
	VCA alarm	Added object left behind and removal alarms
	APP collaboration	Improves image display speed on APP.
	Playback	Supports 32x playback on VMS-B200
	CDN (RTMP)	Added channel-based CDN configuration
	Prompt to change password	Added a message prompting user to change temporary password
	Device connection	Supports adding channels in batch via RTSP
Deleted features	3G/4G	Support 3G/4G SIM card.

4.2 Operation Change Description

None

4.3 Solved Issues

None

5 Related Documents and Delivery Method

Table 12 Related Document List

Manual Name	Manual Version	Delivery
Network Video Recorders Quick Guide	V1.00	Deliver with device.

6 Version Upgrade Guidance

6.1 Precautions

- This software system includes a software program mirror (Program.bin). Before you start upgrade, please back up configuration data through the system or Web interface in case the upgrade fails.

- Maintain proper network connection and power supply during the upgrade.

6.2 Upgrade Procedure

The version can be upgraded through the system interface and the Web interface, both support cloud upgrade.

6.3 Upgrade Through the System Interface

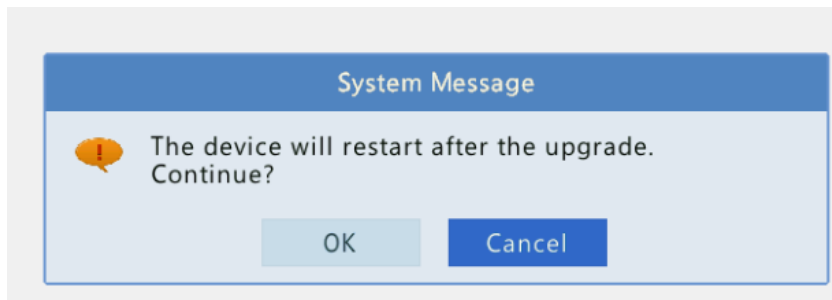
The system interface provides two options for upgrading the system software: local upgrade using a USB drive and cloud upgrade.

1. Local upgrade

Before you start, copy the correct upgrade file to the root directory of the USB drive.

- (1) Plug the USB drive into the USB interface on the NVR.
- (2) Log in to the system interface as “admin”.
- (3) Click **Maintain > Upgrade**.
- (4) Click **Upgrade**, select the upgrade file from the drop-down list, and then click **Upgrade**. A prompt message appears.
- (5) Click **OK**.

Figure 1 Prompt Message



- (6) The NVR will restart automatically when the upgrade is completed.

2. Cloud upgrade

Before you start, check that the NVR is correctly connected to the public network.

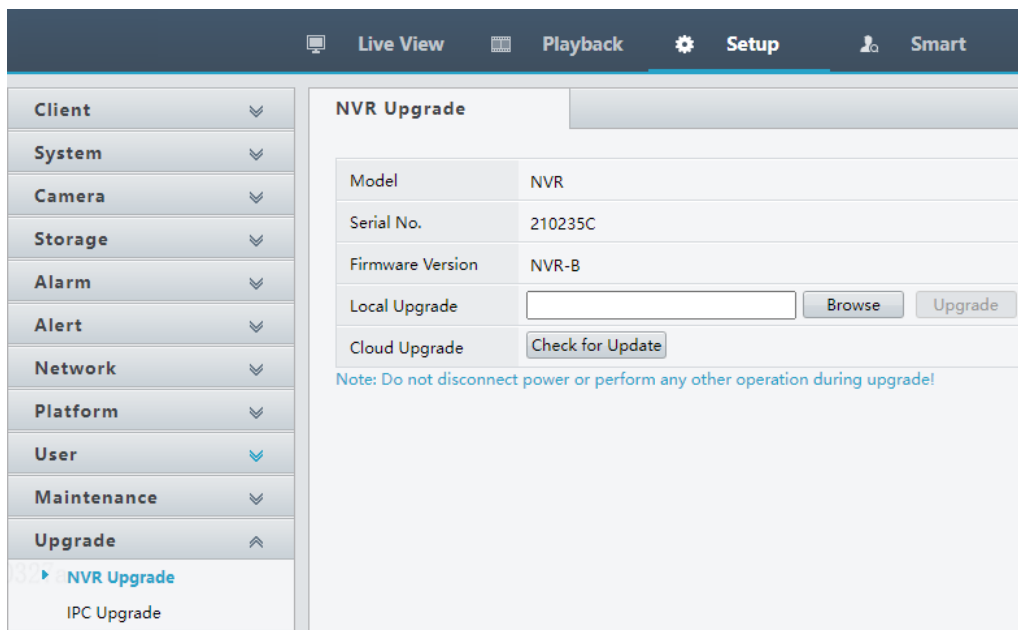
- (1) Click **Maintain > Upgrade**, and then click **Check** to check for the latest version.
- (2) Click **Upgrade** after a newer version is detected.

6.4 Upgrade Through the Web Interface

Perform the following steps to upgrade through the Web interface:

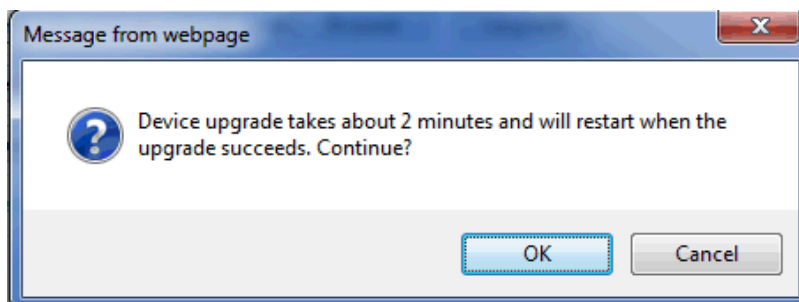
- (1) Log in to the Web interface as “admin”.
- (2) Click Upgrade > NVR Upgrade.

Figure 2 NVR Update



- (3) Click **Browse** right to the **Upgrade** field, select the **Program.bin** file to upgrade, and then click **Upgrade**.
- (4) If the NVR is connected to the public network, you may also click **Check** to perform a cloud upgrade. If a newer version is detected, a prompt message will appear. Click **OK** to start upgrade.

Figure 1 Prompt Message



- (5) The NVR will restart automatically when the upgrade is completed.

Version Upgrade Disclaimer

1. By setting or installing this program in any way you agree to all of the following terms and conditions. Your downloading or using the program means you acknowledge your full understanding and acceptance of the following terms and conditions. If you do not agree to any of the following terms, you

shall not use the program and you must cease installing and delete the program immediately.

2. The upgrade program is only applicable to the intended regions and product models. Before upgrade or update, please read the release notes carefully to make sure the program is applicable to your region and product model. You will be fully liable and responsible for all the consequences of device abnormality and related maintenance costs caused by your improper operations.
3. Uniview owns or is legally authorized to own all rights and IPRs (Intellectual Property Rights) of the program and the supplied release notes.
4. Software upgrades are for the optimization of product functions and do not mean there is defect.
5. You must strictly follow instructions in the release notes during the upgrade process, otherwise you are responsible for the possible consequences and related maintenance costs.
6. You shall not engage in any of the following activities, otherwise you would be liable for infringement and responsible for any adverse consequences arising therefrom.
 - 6.1 Copy the program (exclude the reasonable and necessary copies for internal backups);
 - 6.2 Exclude this statement when using the program or transfer the program to any third party;
 - 6.3 Modify the program or its derivatives;
 - 6.4 Reverse engineer, decompile or disassemble this program.
7. The program is only intended for authorized users. Its architecture, organization and source code are valuable trade secrets and confidential information owned by Uniview and its authorized parties. You agree not to provide or disclose any confidential information contained in or derived from the software to any third party. No part of this document may be excerpted, reproduced, or distributed in any form by any entity or individual without written consent from our company.